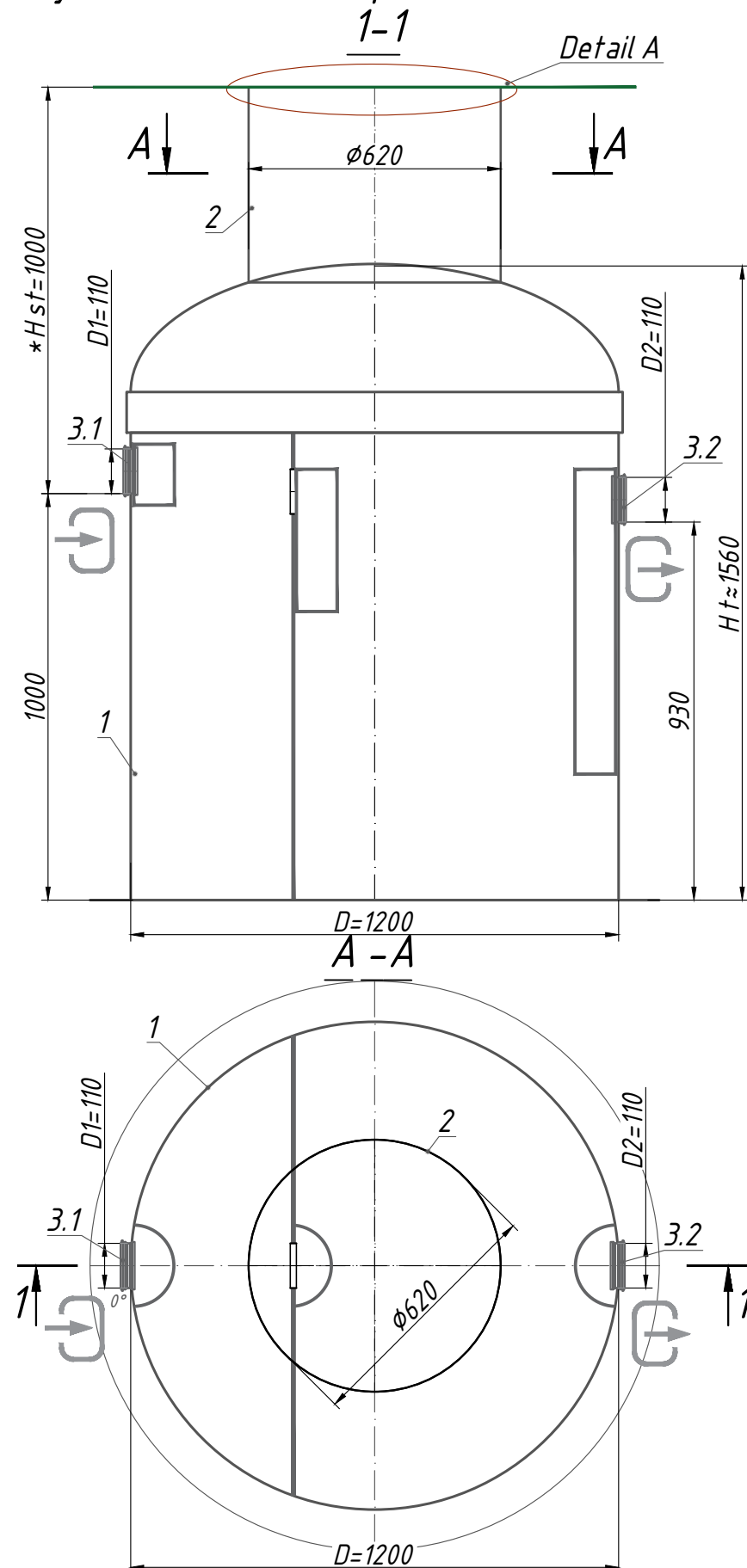


Gravity Grease Interceptor GreaseBase -3 (S 1:16)



Specification of materials and equipment. Standard equipment ** (Tabl. 1)

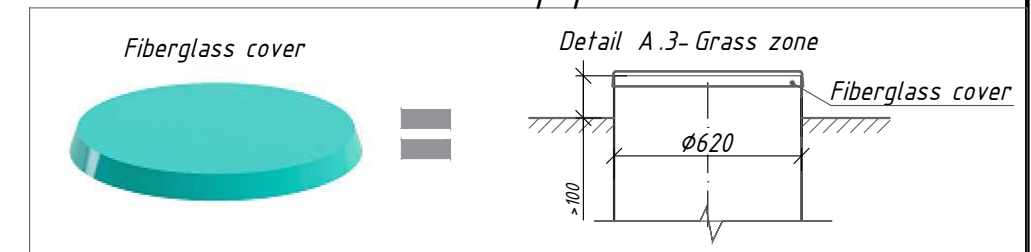
Pos.	Identification	Name	Q-ty	Mass pc.,kg	Note
1	Vodaland	Gravity Grease Interceptor Vodaland GreaseBase -3 with sludge trap, disch. 3l/s, fiberglass, D= 1200, Ht≈1560 mm	1	140	compl.
2		Inspection manhole $\phi 620$	1		compl.
3.1,3.2	D1-Inlet / D2-Outlet	Rubber seal for connection $\phi 110$	2		compl.
		Volume of light liquids	290		l
		Volume of sludge trap	305		l

**The product is shipped according to Standard Equipment (Tabl. 1), unless otherwise specified in the Additional Information

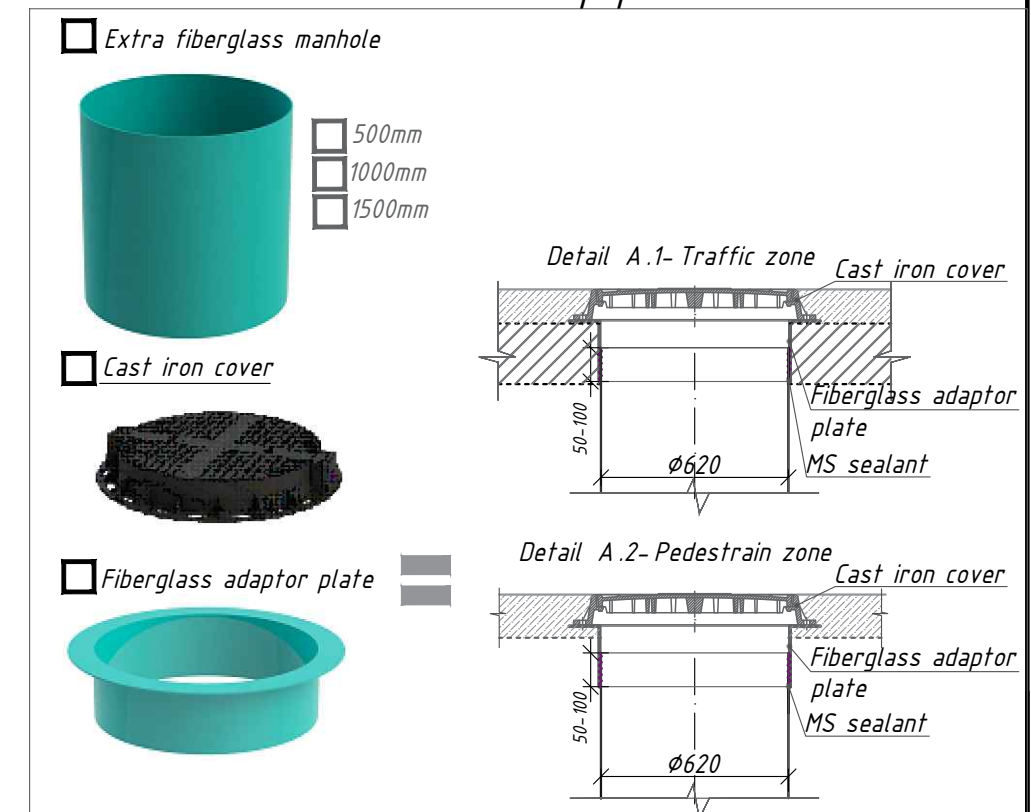
Gravity Grease Interceptor



Standard equipment



Additional equipment



Note:

- *H-depth of the inlet connection (in standard equipment H up to 1000 mm. H take a multiple of 50mm.
- **The product is shipped according to Standard Equipment (Tabl. 1), unless otherwise specified in the Additional Information. The complete set of the product is agreed with the manager.
- ***The manufacturer reserves the right to make design and schematic changes that do not impair the characteristics of the product as a whole. Permissible deviation during production of products is 1-3%.

Additional Information:

Gravity Grease Interceptor
GreaseBase -3

Factory ID: GB- 3

VODALAND ESPAÑA SL
Calle del Proyecto N6,nave 17,
46393 Loriguilla (Masia del Conde)
+34 651 030 722

