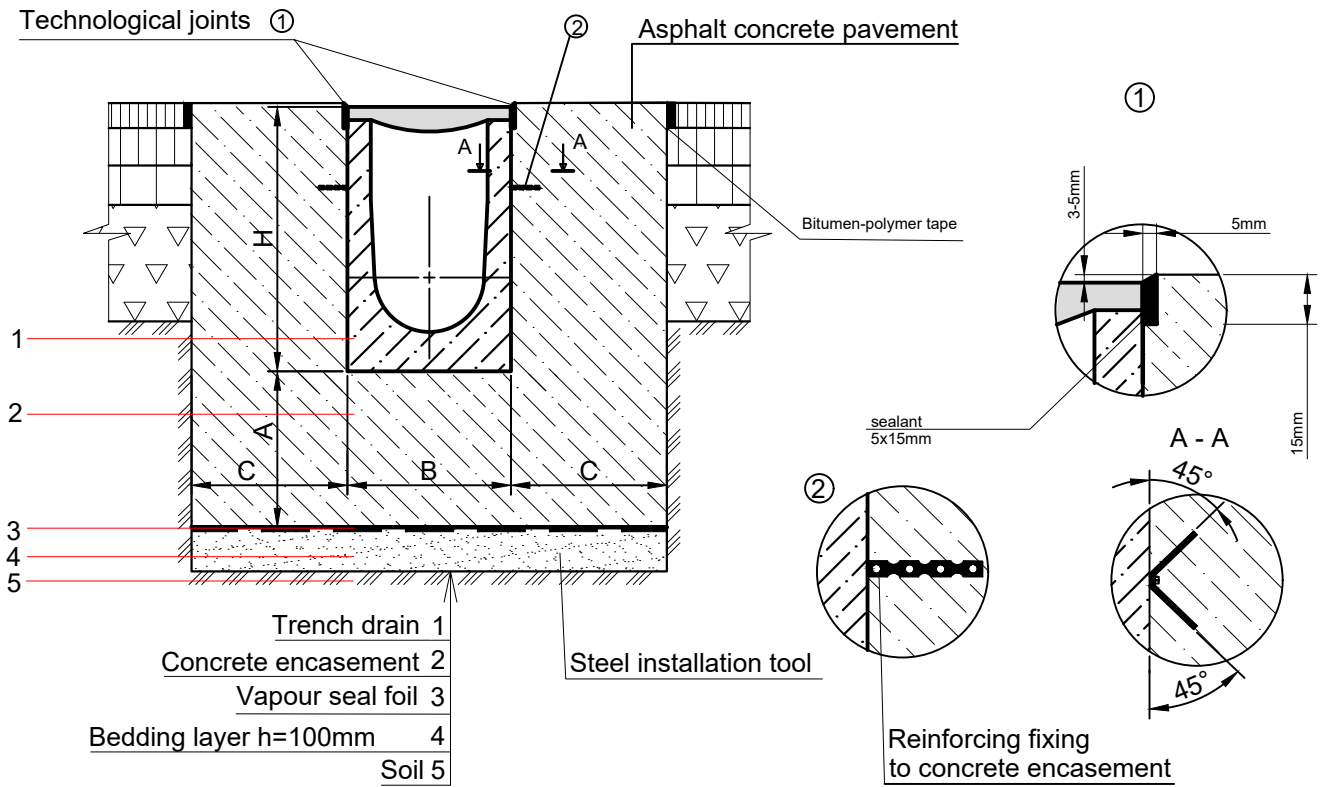


Installation of Pro series Polymer Concrete channels with a hydraulic cross-section 500mm into an asphalt concrete pavement



Recommended parameters of the Concrete encasement

Parameter	Load class
Concrete encasement depth (A), in	200mm
Concrete encasement width (C), in	200mm
Concrete grade	C30/35

1. The installation diagram is an integral part of the installation manual.
2. The design of the concrete encasement and the load classes are adopted in accordance with EN 1433 "Guidelines for the installation of surface drainage systems".
3. Load classes according to EN 1433 "Guidelines for the installation of surface drainage systems".
4. The parameters of the compacted base, the concrete encasement, as well as the need for its reinforcement, must be specified according to the geological and climatic conditions at the construction site or recalculated by the project engineer of the site.
5. During the installation of the pavement, it is prohibited for compaction machinery to drive onto the installed drainage line
6. The type, geometric parameters, and the need for a technological (temperature or deformation) joint must be specified according to the geological and climatic conditions at the construction site or recalculated by the project engineer of the site.
7. This installation example is a recommendation by VODALAND. The final decision must be made by the project-responsible engineering organization, taking into account the local and specific conditions of the project.
8. H and B are the overall dimensions of the drainage channel.
9. It is recommended to periodically check the bolt connection for loosening, depending on the intensity of vehicle traffic.
10. During installation, check the presence of reinforcing fixings securing the channel to the concrete encasement.
11. Before installation, each edge of the reinforcing plate shall be bent at an angle of 45° relative to the channel wall so that the plate forms a V-shaped profile (see point 2).
12. Installation of drainage channels shall be carried out only together with a cast iron grating.

UNLESS OTHERWISE SPECIFIED: DIMENSIONS ARE IN MILLIMETERS SURFACE FINISH: TOLERANCES: LINEAR: ANGULAR:	FINISH:	DEBURR AND BREAK SHARP EDGES	DO NOT SCALE DRAWING	REVISION
DRAWN	SIGNATURE	DATE	500mm Pro series Polymer Concrete channels Asphalt concrete pavement	
CHK'D				
APP'VD				
APP'VD				
MATERIAL: Polymer Concrete			ARTICLE:	